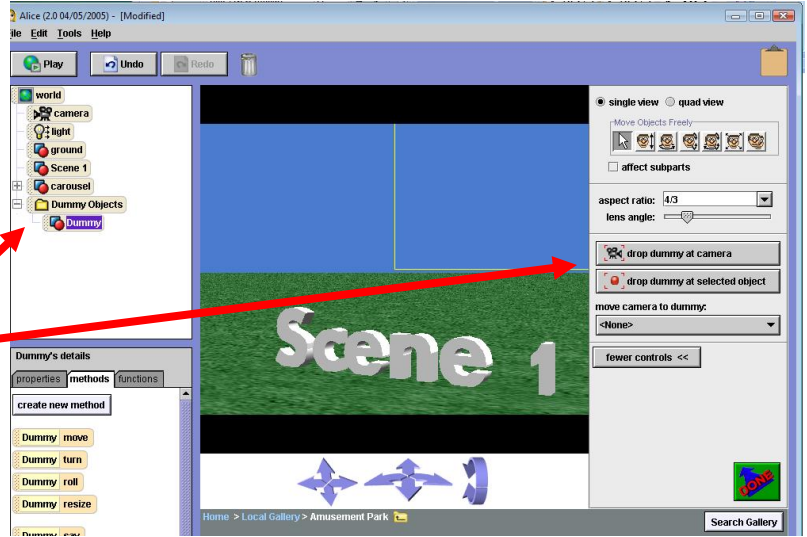


# To change scenes

First you must create a scene and then save it

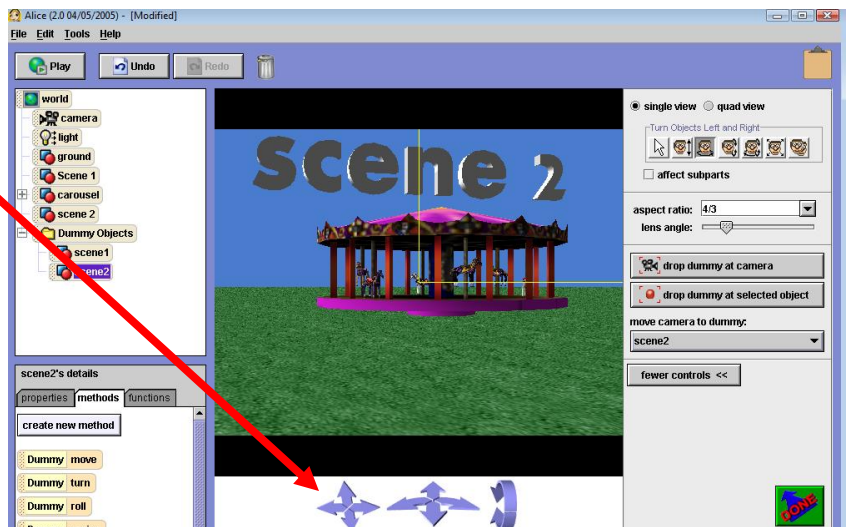
1. create a scene
2. Click add objects
3. Click More controls
4. Drop a dummy at camera
5. Rename dummy object to Scene1
6. Click DONE



## Create another Scene following the directions above

Use the Arrows to move left or right and create a new scene

1. Create scene 2
2. Click done
3. Click "drop dummy at camera"
4. Rename "dummy" to scene2
5. Click DONE



Now you must put the camera code into your world to move from scene to scene.

1. Click on the camera methods
2. Drag "set point of view to"
3. Select the dummy scene you want to start with
4. When you want the scene to change drag another "set point of view to" and choose the dummy scene you want it to change to.

